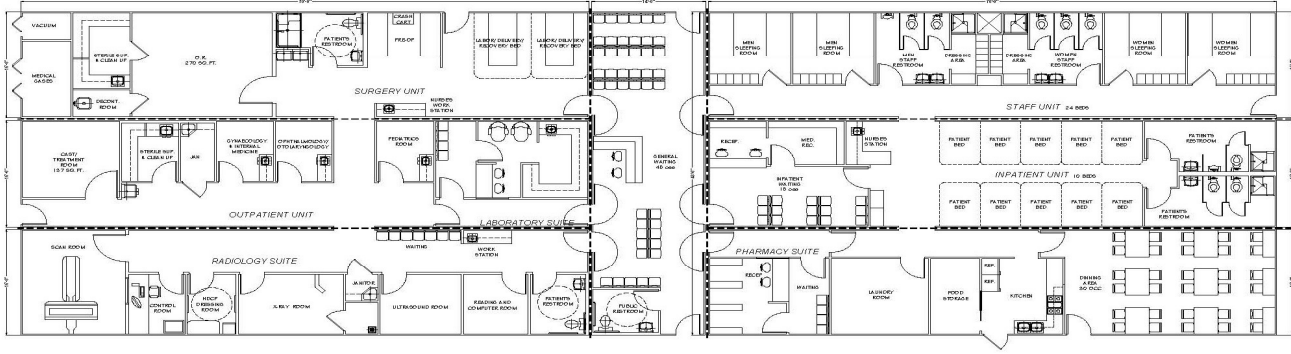




Portable Expandable Hospitals

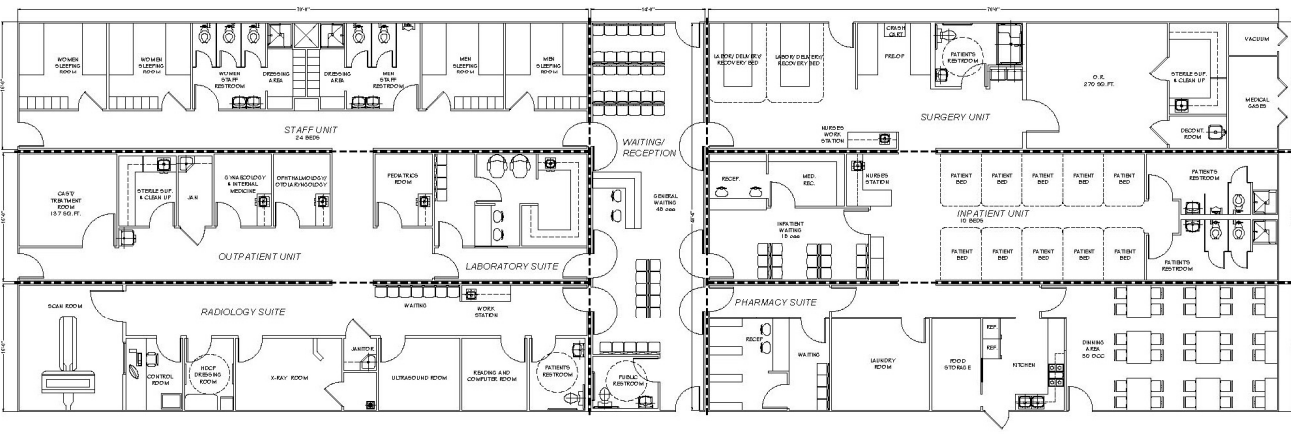
toll free 866.733.8686
 direct 831.423.6363
 fax 831.423.9331
 www.energistx.com
 info@energistx.com

THESE DRAWINGS AND SPECIFICATIONS ARE THE PROPERTY OF AMERICAN BIO-MEDICAL SERVICE CORP. and are not to be reproduced, changed or copied in any form or manner, nor are they to be assigned to any third party without the written authorization of AMERICAN BIO-MEDICAL SERVICE CORP.



SPACE DISTRIBUTION PLAN
 Total area: 7,392 sq. ft.
 Proposal 1

THESE DRAWINGS AND SPECIFICATIONS ARE THE PROPERTY OF AMERICAN BIO-MEDICAL SERVICE CORP. and are not to be reproduced, changed or copied in any form or manner, nor are they to be assigned to any third party without the written authorization of AMERICAN BIO-MEDICAL SERVICE CORP.



SPACE DISTRIBUTION PLAN
 Total area: 7,392 sq. ft.
 Proposal 2