

# FLOATING HOTELS

Life Support for Industry, Special Events  
and Disaster Relief

Presented by:

**TARGET LOGISTICS**  
Innovative Housing and Transportation Solutions

# FLOATELS

**These estimates are intended to be “turnkey”, require no capital expenditures and include the following:**

- All residential requirements based on occupancy as noted for each ship submitted
- All linens, residential furniture, and bedding
- Fully equipped kitchens and dining facilities
- Anti-Terrorism, Force Protection and security services
- Full complement of ablution facilities, primarily ensuite (see details for each vessel)
- Electrical generating plants (fuel additional)
- Water purification & storage systems (water delivery additional)
- Waste management systems (waste removal and carting additional)
- Fire and HAZMAT protection programs
- Fully equipped recreation facilities and resident entertainment program
- Laundry service

# FLOATELS Continued

- Fully furnished medical facility with medical staffing and equipment levels appropriate to ship size.
- Environmental protection planning
- Maintenance for physical plant and utilities
- Maintenance of common areas, housekeeping, and grounds keeping
- Food service operations including 3 meals per day (see attached menu)
- All labor costs related to repositioning of vessel, management (US Military trained implementation team), catering, maintenance, and eventual repositioning of all the floatels
- Full compliance with the Marine Codes, Regulations, and Laws of the United States (FEMA assistance may be required to expedite this process)

# PRICING

<b>PASSENGER and CAR</b>	<b>PAX Capacity</b>	<b>6 month rate (per pax)</b>	<b>12 month rate (per pax)</b>	<b>24 month rate (per pax)</b>
Fantaasia	993	\$134.00	\$95.21	\$87.96
Melodia	906	\$142.93	\$100.59	\$91.65
Vana Tallinn	929	\$124.88	\$94.55	\$87.96
Regina Baltica	1350	\$122.95	\$93.43	\$87.96
Lissos	918	\$109.48	\$98.97	\$94.35
<b>PASSENGER ONLY</b>				
Monterey	731	\$151.75	\$95.94	\$87.96
Ocean Monarch	664	\$119.49	\$107.05	\$101.15
Princessa Marisa	933	n/a	\$90.81	\$87.96
Ausonia	801	n/a	\$101.07	\$96.61
Serenade	732	n/a	\$97.15	\$93.74
Mona Lisa	1000	\$118.32	\$98.22	\$94.63

**All pricing assumes use at passenger capacity for term of contract.**

# NOTES

- These pricing estimates are based upon current availability. These ships are not secured for this project and therefore a commitment and deposit are required as soon as possible. This offer does not create a legally binding commitment on the part of Target Logistics. All written work is considered to be the sole property of Target Logistics and is confidential and proprietary.
- Items not included in this estimate are: water delivery, sewage removal, carting of solid waste and daily dockage charges.
- Site preparation costs are not included in this estimate, as all construction and civil engineering would be done on a separate cost plus (10%) basis. Site preparation would include the erection of a dock or pier, dredging, etc.
- No fuel costs are included in this estimate, except those for mobilization and demobilization as this would be treated as a pass through cost.
- No provisions have been made for satellite communications costs, permits for construction and occupancy, or applicable federal, state and local taxes.
- Charterer would be required to provide insurance equivalent to replacement value for all leased property, including the vessel and its contents.
- All security costs include a relatively stable security situation. Further security provisions may be required.
- Terms: First month's rental and one month's payment as security deposit required in advance, payment after that to be monthly, in advance.
- All vessels listed will utilize between 30 and 60 crew cabins for passengers to augment the passenger cabin totals listed to achieve capacity described.

# FANTAASIA

## CAR / TRAILER / NIGHT PASSENGER VESSELS

- Fantaasia (1979)
- Night passenger capacity: 993
- Cabins: 394
- Car Capacity: 309



# FANTAASIA

## Cabins



## Car Deck

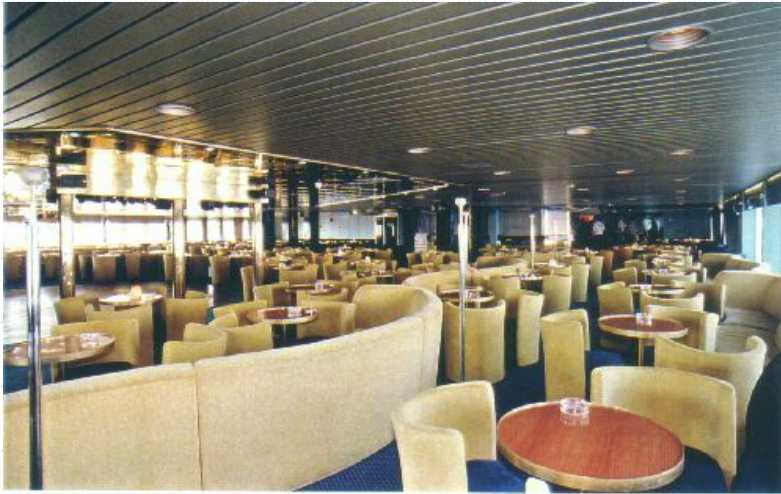


## Kid's Play Area



# FANTAASIA

## Dining Areas & Lounges





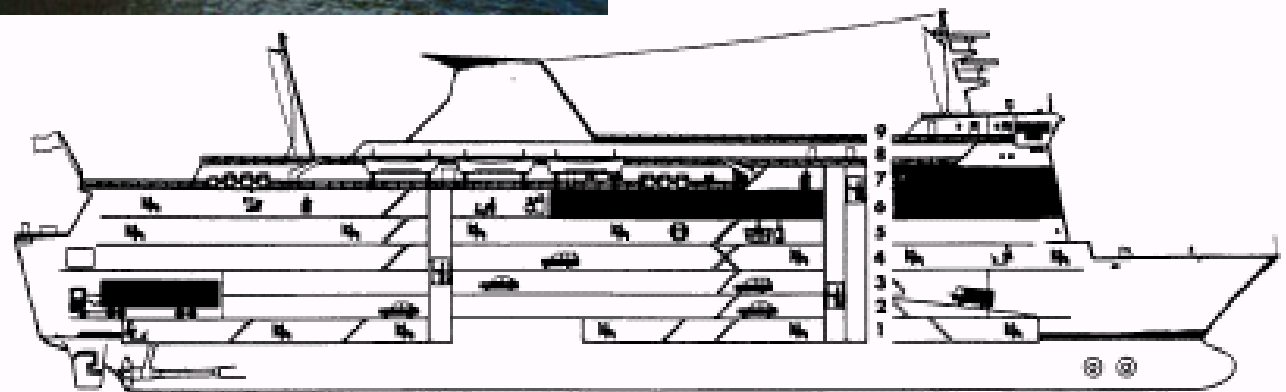
# MELOODIA

## CAR / TRAILER / NIGHT PASSENGER VESSELS

- Meloodia (1979)
- Night passenger capacity: 906
- Cabins: 371
- Car Capacity: 480

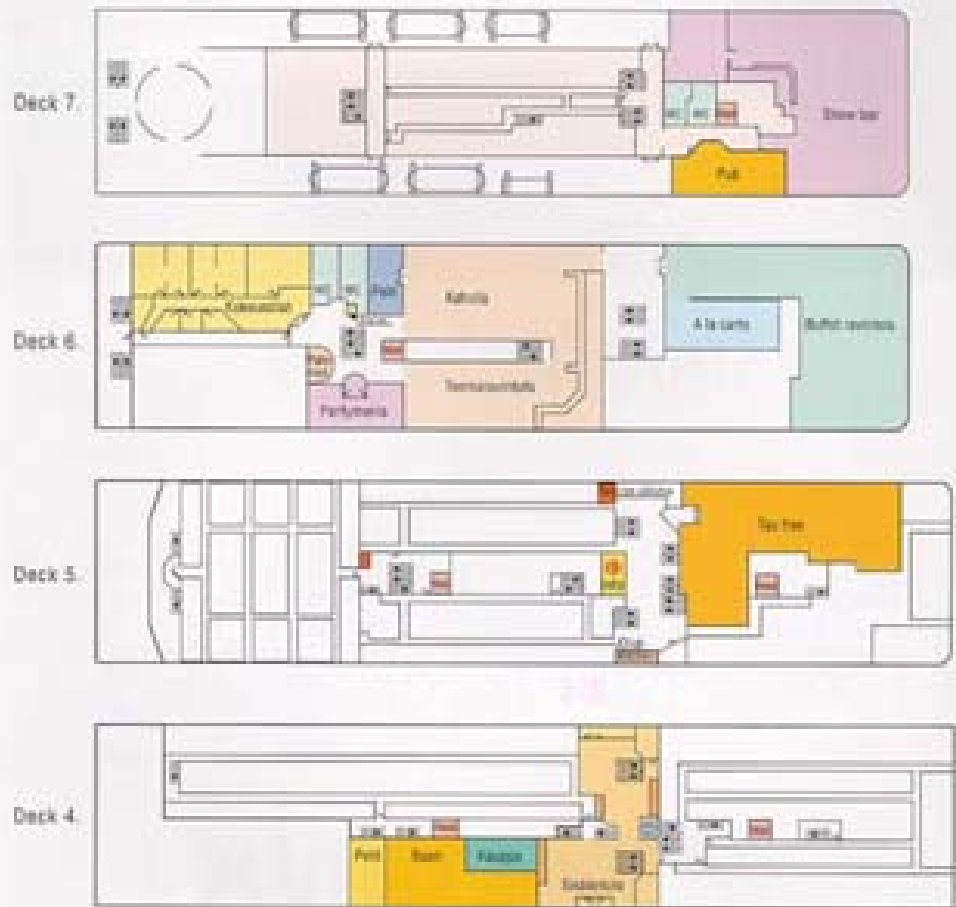


# MELODIA



# MELOODIA

m/s Meloodia



# VANA TALLINN

## CAR / TRAILER / NIGHT PASSENGER VESSELS

- Vana Tallinn (1974)
- Night passenger capacity: 929
- Cabins: 310
- Car Capacity: 160



# VANA TALLINN

## Cabins



# VANA TALLINN

## Cabin



# VANA TALLINN

## Conference Rooms



# VANA TALLINN

Store





# VANA TALLINN

## Dining rooms



# VANA TALLINN

## Dining rooms



# VANA TALLINN

## Lounge



# VANA TALLINN

Nightclub



# VANA TALLINN

Pub



# REGINA BALTICA

## CAR / TRAILER / NIGHT PASSENGER VESSELS

- Regina Baltica (1980)
- Night passenger capacity: 1350
- Cabins: 555
- Car Capacity: 500



# REGINA BALTICA



# PRINCESA MARISSA

CAR / TRAILER / NIGHT PASSENGER VESSELS

- Princesa Marissa (1966)
- Night passenger capacity: 933
- Cabins: 340
- Car Capacity: 95





# PRINCESA MARISSA

## GENERAL INFORMATION



EX-NAMES	PRINSESSAN, FINNHANSA
TYPE OF VESSEL	RO-RO PASSENGER SHIP
FLAG	CYPRUS
CALL SIGN	P3HO2
CLASS	DET NORSKE VERITAS (D.N.V.) +1A1 CAR FERRY ICE A + MV ID.NO. – 01719 IMO NO. – 6509371
BUILT	1966
SHIPYARD	OY WARTSILA AB, HELSINKI – YARD NO. 377
MATERIAL	STEEL / WELDED
FLAG	CYPRUS
OFFICIAL NUMBER	708110
SOLAS	BUILT ACCORDING TO SOLAS 60, METHOD 1 WITH SPRINKLER. ALSO COMPLIES WITH AMENDMENTS 1974, 1992, 1995 AND IMO REQUIREMENTS UP TO DATE.

## PASSENGERS CERTIFIED CARRYING CAPACITY

	SUMMER – 978 PAX WINTER – 750 PAX
CRUISING SPEED	16.00 KNOTS
MAXIMUM SPEED	17.00 KNOTS
GROSS TONNAGE (GRT)	10,487 TONS
NET TONNAGE (NRT)	4,600 TONS
SUEZ CANAL NET TONNAGE (SCNT)	9,491.2
LENGTH OVERALL	134.30 m
LENGTH B.P.	118.913 m
BREADTH	19.90 m
DEPTH	12.30 m TO DECK 5
DRAUGHT (MAXIMUM)	5.70 m
AIRDRAFT	31.00 m
DEADWEIGHT (DWT)	1126.23 TONS
LIGHTWEIGHT	6,477 TONS
DISPLACEMENT	8,500 TONS

## PASSENGER SHIP SAFETY CERTIFICATE

978 PAX (SUMMER), 750 PAX (WINTER)  
(For Short International Voyages)

# PRINCESA MARISSA

## VESSEL'S PARTICULARS

### PASSENGER CABIN CONFIGURATION

Cat.	Type	Deck	2 Bed / Berth	3 Berth	4 Berth	Double Bed	Cabin Total	Pax Total
A	2 Berth Inside Cabins with Wash Basin	2	52		1		53	108
B	2 Berth Inside Cabins with Shower / WC	3/5	14	1	10		25	71
C	2 Berth Inside Cabins with Shower / WC	4	22				22	44
D	2 Berth Inside Cabins with Shower / WC	5/7	42	2	8		52	122
E	2 Bed or 3/4 Berth Inside Cabins with Shower / W.C.	4			28		28	112
F	2 Berth Outside Cabins with Shower / WC	5/7	15				15	30
G	2 Bed or 3/4 Berth Outside Cabins with Shower / W.C.	4/5/7	3		40		43	166
H	2 Bed or 3/4 Berth Outside Cabins with Shower / W.C.	5	15	5	33	1	54	179
I	Junior Suites	7	4		1		5	12
J	Suites	5/7		1	1	1	3	9
			167	9	122	2	300	853

\*\*\* 454 lower – 389 upper berths



## **PRINCESA MARISSA**

- Gross Tonnage: 10.487 • Passengers: 855 • Length: 134.3m
- 19.9 Breadth 5.4 Draught • 8 Decks • 2 Dining Rooms
- Entertainment Lounge Bar • Summer Bar • Casino
- Photoshop • Duty Free Shops • Disco • Boutique • Bank
- 2 Elevators • Electric Current in Cabins 110v/220v AC
- Doctor on Board • Satellite Telephone • Full Air-Conditioning
- Classification Det Norske Veritas • Flag: Cyprus

# PRINCESA MARISSA

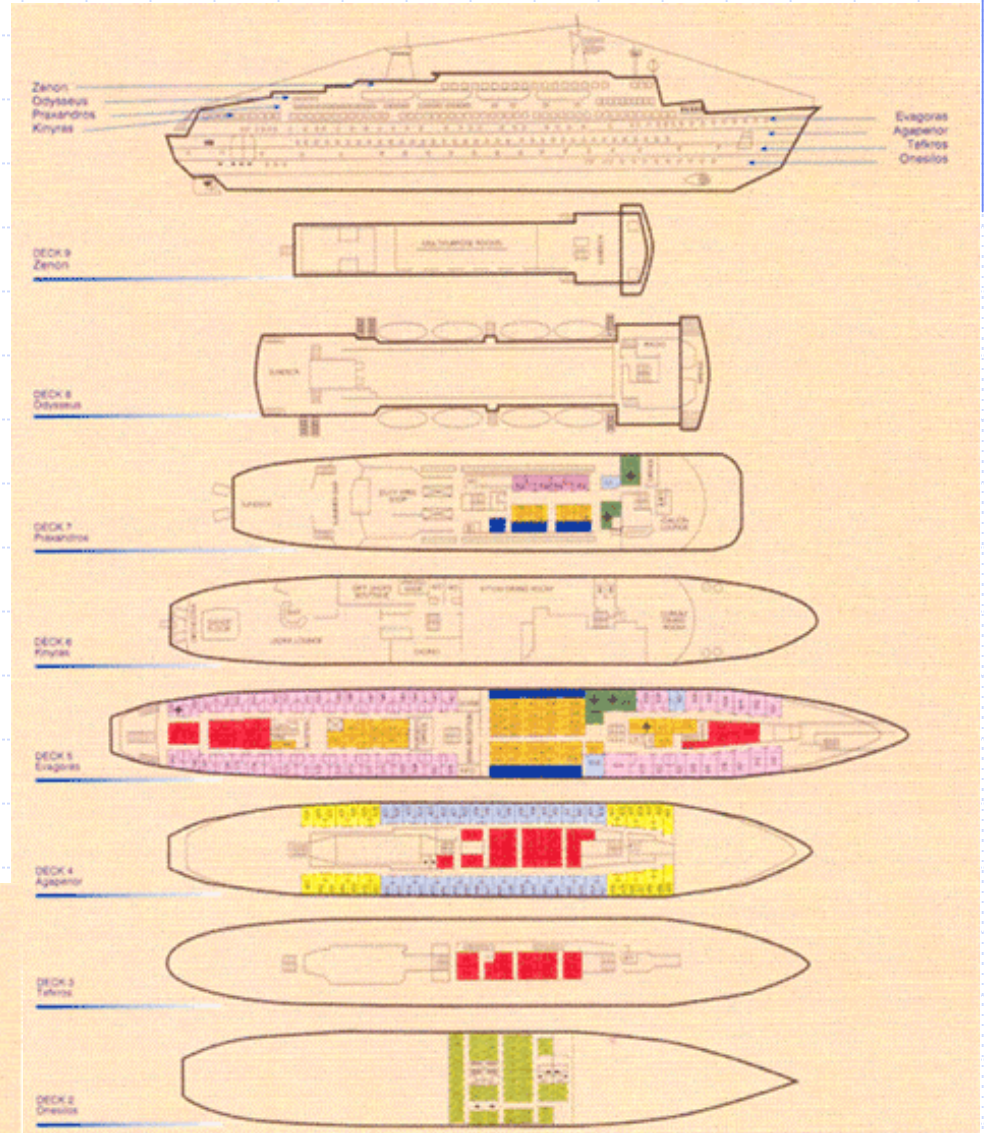
## VESSEL'S PARTICULARS

### OTHER INFORMATION

▪ DINING ROOMS	a) Curium Restaurant b) Kition Restaurant	170 seats (190m <sup>2</sup> ) 250 seats (380m <sup>2</sup> )
▪ LEDRA MAIN LOUNGE	398 seats	380m <sup>2</sup>
▪ IDALION LOUNGE	115 seats	140m <sup>2</sup>
▪ SUMMER BAR	154 seats	366m <sup>2</sup>
▪ CONFERENCE ROOMS		145m <sup>2</sup>
▪ CURRENT	220V in Cabins & Public Rooms	
▪ HOSPITAL	Yes – First Aid Only	
▪ DUTY FREE SHOPS	Yes	Deck 6 – 155m <sup>2</sup> Deck 7 – 165m <sup>2</sup>
▪ AIR CONDITIONING	Fully Air Conditioned	
▪ SWIMMING POOL	NO	
▪ JACUZZI	NO	
▪ CASINO	YES – 1 ROULETTE, 2 BLACK JACK, 22 SLOT MACHINES	
▪ PASSENGER ELEVATORS	1 OF 4 PEOPLE	
▪ BAR'S ELEVATOR	1 OF 4 PEOPLE	
▪ KITCHEN ELEVATOR FOR GOODS	1 OF 1 TON (1000kg)	
▪ PUBLIC ADDRESS SYSTEM AND GENERAL ALARM SYSTEM		
▪ STERN RAMP	Breadth: 4.5 m	Height: 4.5 m
▪ CAR DECK AFT PART HEIGHT	4.20 m	
▪ CAR DECK AFT REMAINING HEIGHT	1.80 m	
▪ CAR DECK LENGTH	104.00m	
▪ PRIVATE CARS	95 of 4.2 m (can also carry trucks)	
▪ CLOSED CIRCUIT T.V. WITH 4 CAMERAS IN GARAGE & 2 IN PILOT DOORS.		
▪ VESSEL CAN PROVIDE AIR SUPPORT – HELICOPTERS FROM HELIPAD		

# PRINCESA MARISSA

## Ship Layout



CATEGORY	CABIN DESCRIPTION	DECK
CATEGORY I	Suites 2 bed, or 3/4 bed outside with bath & WC	5/7
CATEGORY H	2 bed, outside mini-suites with bath & WC	7
CATEGORY G	2 bed or 3/4 berth, outside with shower & WC	5
CATEGORY F	2 bed or 3/4 berth, outside with shower & WC	4/5/7
CATEGORY E	2 bed or 3/4 berth, outside with shower & WC	4
CATEGORY D	2 berth outside with shower & WC	5/7
CATEGORY C	2/3/4 berth inside with shower & WC	5/7
CATEGORY B	2/3/4 berth inside with shower & WC	3/4/5
CATEGORY A	2 berth inside cabins with wash basin	2
+	Matrimonial bed	

# PRINCESA MARISSA

## Cabins



# PRINCESA MARISSA

Store



# PRINCESA MARISSA

Dining rooms



# PRINCESA MARISSA

Lounge



Casino





# LISSOS

## CAR / TRAILER / NIGHT PASSENGER VESSELS

- Lissos (1972)
- Night passenger capacity: 918
- Cabins: 334
- Car Capacity: 550



# LISSOS



# LISSOS



Garage



# LISSOS

## Reception



# LISSOS

## Lobby & Lounge



# LISSOS

## Lounge



# LISSOS

## Dining Areas



# LISSOS

## Cabins





# LISSOS

## Cabins



# LISSOS

## Cabins



# LISSOS

## Pool



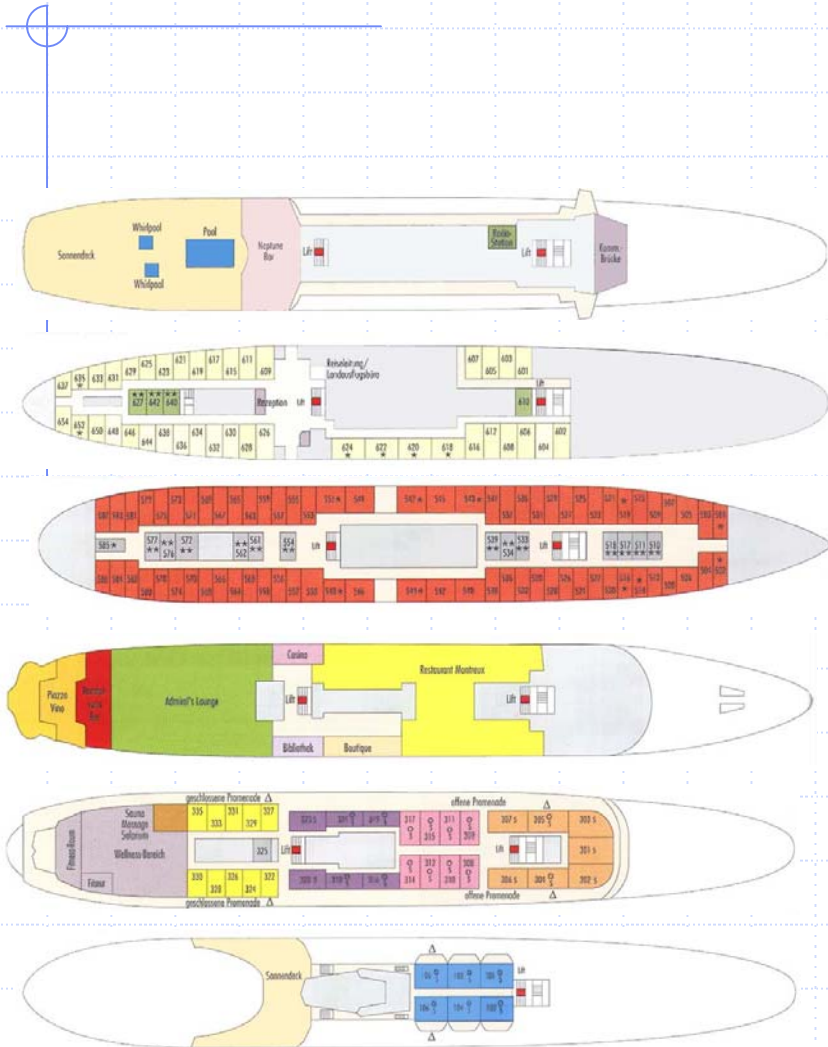
# OCEAN MONARCH

## PASSENGER VESSEL

- Ocean Monarch (1955)
- Night passenger capacity: 604
- Cabins: 249



# OCEAN MONARCH



# OCEAN MONARCH

## Statistics

- Loa 162.37m - breadth 21.34 m
- Decks for passengers: 7
- About 3757 tdw on 7.80m draft (laden)
- Built 3/1955 by swan hunter & Wigham Richardson Ltd., Wallsend, U.K.
- Rebuilt/converted to cruise ship 1975, Greece, when new accommodation constructed
- Renovated: 1991
- Extensively converted/refurbished/ upgraded: 1997
- Refurbished: 4/2003
- Special survey passed 5/2003
- Last d.d. done 5/2003
- Main engines: doxford 671bd6 2 x 6500 bhp
- About 14.5 knots on about 26 mts 40 cst
- Delivery Piraeus 'as is where is' Piraeus area second half October 2005
- Passengers: 544 in 219 staterooms, all with private facilities
- (Total outside staterooms 195 + inside staterooms 24)
- 219 staterooms averaging 18 sq.m. each, including 27 suites with separate sitting areas, 6 of which with veranda.
- Admirals lounge (show lounge) 480 seats
- Rendez-vous bar (48 seats)
- Piazza Vino (80 seats)
- Dining room (460 seats)
- Discoteque, Four bars
- Conference center
- Casino and slot machines
- Library/card room
- Two whirlpools, Sauna
- Gymnasium
- Massage room, Spa
- Beauty salon
- Fully equipped medical center
- Laundry and dry cleaning facilities
- Outdoor swimming pool
- Two passenger elevators
- One service elevator
- Air conditioned (individual controls)

# MONTEREY

## PASSENGER VESSELS

- Monterey (1952)
- Night passenger capacity: 731
- Cabins: 318



# MONTEREY



## Categorie Cabine/Cabins Category

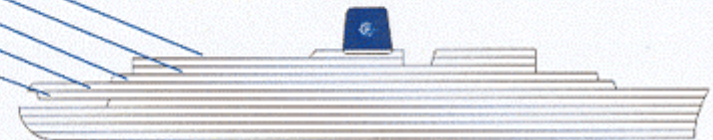
- |    |  |
|----|--|
| 1  | Interne 4 letti / Inside 4 beds                          |
| 2  | Interne 2 letti sovrapposti / Inside 2 upper-lower-beds  |
| 3  | Interne 2 letti sovrapposti / Inside 2 upper-lower-beds  |
| 4  | Esterne 2 letti sovrapposti / Outside 2 upper-lower-beds |
| 5  | Interne 2 letti bassi / Inside 2 lower beds              |
| 6  | Interne 2 letti bassi / Inside 2 lower beds              |
| 7  | Interne 2 letti bassi / Inside 2 lower beds              |
| 8  | Esterne 2 letti bassi / Outside 2 lower beds             |
| 9  | Esterne 2 letti bassi / Outside 2 lower beds             |
| 10 | Esterne 2 letti bassi / Outside 2 lower beds             |
| 11 | Esterne 2 letti bassi / Outside 2 lower beds             |
| 12 | Esterne 2 letti bassi / Outside 2 lower beds             |
| 13 | De Luxe Suites / De Luxe Suites                          |
| 14 | Royal Suites / Royal Suites                              |

## MSC Monterey

### Dati tecnici/Technical features

Lunghezza/Length	mt. 171,80
Larghezza/Beam	mt. 24,50
Pescaggio/Draft	mt. 8,94
Propulsione eliche/Propellers' propulsion	Turbina - Potenza CV 17.500
Stazza lorda/Gross registered tonnage	Steam Turbine - Output HP 17.500
Velocità di crociera/Cruise speed	20.046 tonn.
Capacità max passeggeri/Passenger capacity	18 nodi/18 knots
Totale Cabine/Total cabin	864
	288

Sport Deck  
Boat Deck  
Promenade Deck  
Maile Deck  
Aloha Deck





# MONTEREY

## Aloha Deck

- 1 Main Foyer
- 2 Shore Excursion Office - Ufficio Escursioni
- 3 Sauna
- 4 Jewelry - Gioielleria
- 5 Hair-dresser - Parrucchiere
- 6 Duty Free
- 7 Beauty Salon - Salone di Bellezza
- 8 Massage - Massaggi
- 9 Medical Centre - Centro Medico
- 10 Information Office - Ufficio Informazioni
- 11 Chief Purser's Office - Ufficio Capo Commissario
- 12 Restaurant - Ristorante

## Promenade Deck

- 17 Solarium
- 18 Swimming Pool - Piscina
- 19 Pool Café - Caffé Piscina
- 20 Seven Pearls
- 21 Covered Promenade - Passeggiata coperta
- 22 Boutique Shop
- 23 Palm Terrace
- 24 Casino
- 25 Captain Cook's Bar

## Boat Deck

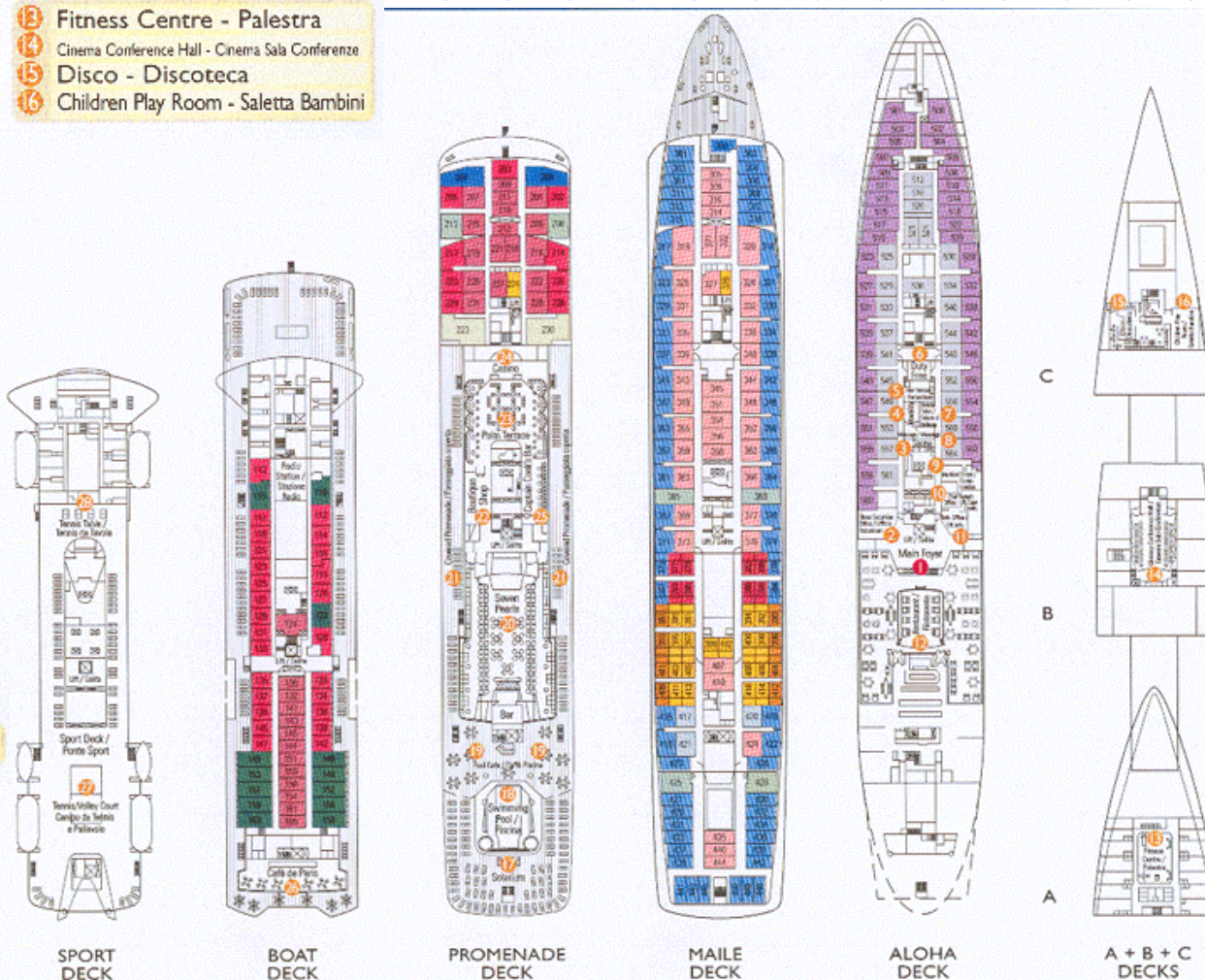
- 26 Café de Paris

## Sport Deck

- 27 Tennis/Volley Court - Campo da Tennis e Pallavolo
- 28 Tennis Table / Tennis da Tavola

## A + B + C Decks

- 13 Fitness Centre - Palestra
- 14 Cinema Conference Hall - Cinema Sala Conferenze
- 15 Disco - Discoteca
- 16 Children Play Room - Saletta Bambini



# MONTEREY

## Cabins

### Suite



# MONTEREY

Pool



Dining



Fitness



# SERENADE

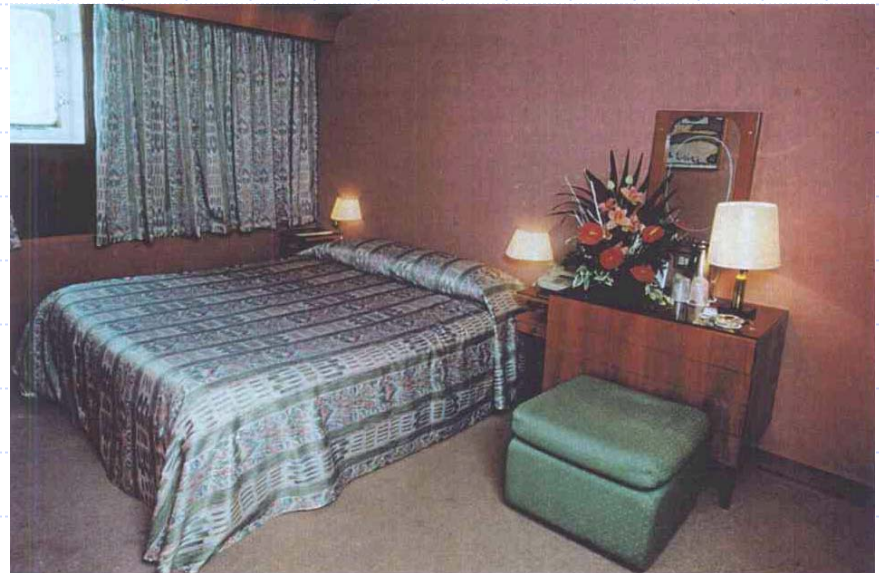
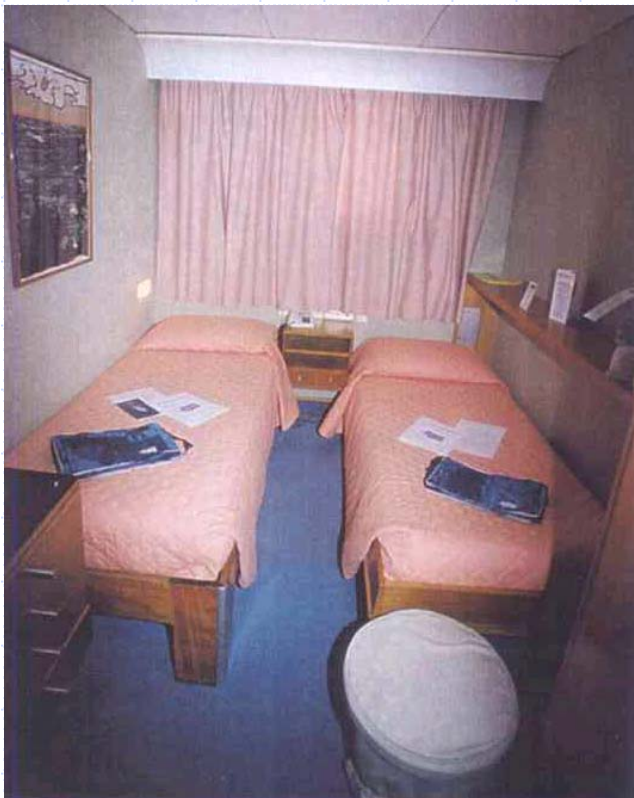
## PASSENGER VESSEL

- Serenade (1957)
- Night passenger capacity: 700+
- Cabins: 300



# SERENADE

## Cabins



# SERENADE

## Dining Areas & Lounges



# AUSONIA

## PASSENGER VESSEL

- Ausonia
- Night passenger capacity : 801
- Cabins: 304



# AUSONIA

## TECHNICAL DATA

FLAG	CYPRUS
BUILDER	CONTIERI RIUNITI DELL ADRIATICO, ITALY
GROSS TONNAGE	12.609
SERVICE SPEED	18 KNOTS
OVERALL LENGTH	159 M
BREADTH	21.3 M
DRAFT	6.54 M
CLASSIFICATION	R.I.N.A.
CREW SIZE	230
CABIN ELECTIC CURRENT	220AC
SAFETY	SOLAS 74 AND ALL LATER AMENTDENTS AS EXISTING SHIP

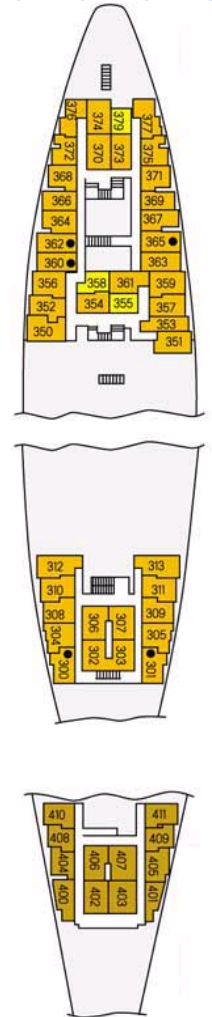
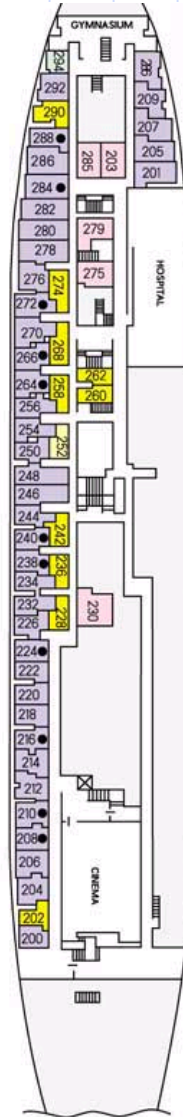
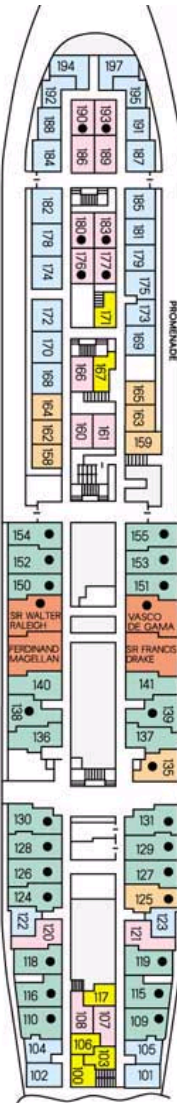
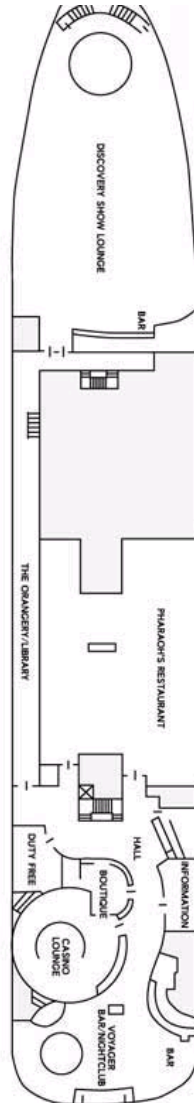
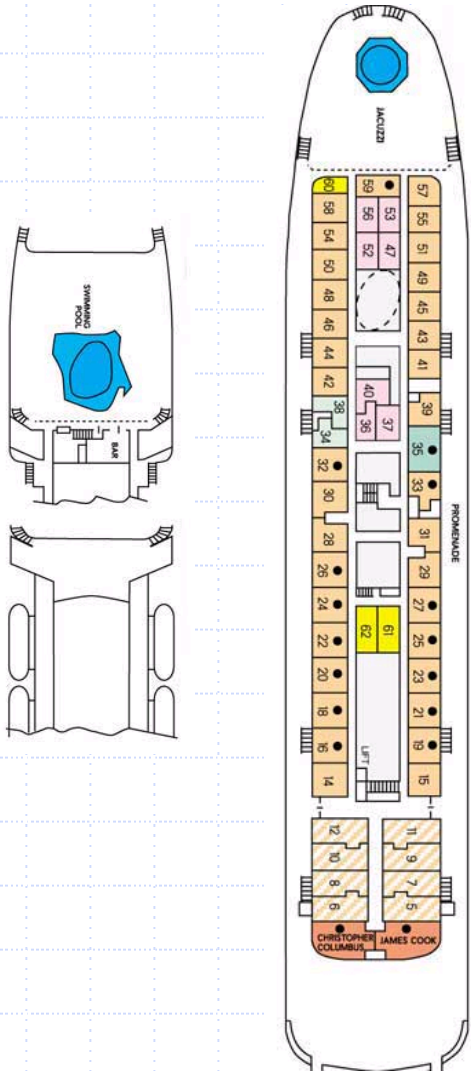
## PUBLIC AREAS CAPACITIES / ACCOMMODATION

PASSENGER DECKS	8
PASSENGER CAPACITY	701
CABINS WITH FULL FACILITIES	254
OUTSIDE CABINS	154
INSIDE CABINS	99
CINEMA	125
LIGHT HOUSE RESTURANT	330
PIANO BAR	110
MAJORCA NIGHT CLUB	400
SKIPPER'S CLUB / CASINO	100
WINTER GARDEN / VERANDA PORTOFINO	24
CARD ROOM	10
LIBRARY	20





# AUSONIA

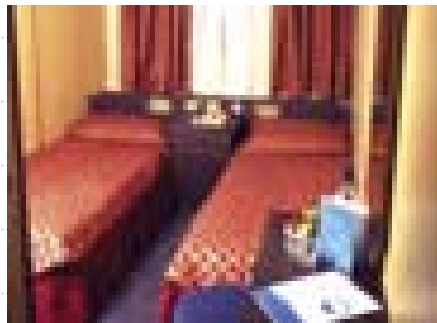


# AUSONIA

## Cabins



## Suites



# MONA LISA

## PASSENGER VESSEL

- **Owners:** Leonardo Shipping Inc.
- **Managers:** Kyma Ship Management Inc.
- **Registry:** Bahamas
- **Classification Society:** Lloyd's Register
- **Former Names:** *Victoria, Sea Princess, Kungsholm*
  - **Builder:** John Brown & Co., Glasgow, Scotland
- **Entered Service:** March 1966
- **Gross Tonnage:** 28,891
- **Net Tonnage:** 11,005
- **Length OA (meters):** 201.23
- **Length BP (meters):** 173.72
- **Depth to Main Deck (meters):** 15.42
- **Draft max (meters):** 8.56
  - **Propulsion:** 2 Gotawerken Direct Drive Diesel - (12,600 BHP)
  - **Propellers:** 2 each 5-bladed Diam. 17'9" Weight 11.77 Tonnes
  - **Generators:** 5 Wartsila Stromberg Type 8V22HF Diesel Generators - 1250 KVA
- **Lifts:** 4
- **Electric Current:** 440V/60Hz
- **Navigation Officers (nationality):** Greek
- **Maximum Crew:** 417
- **Passenger Decks:** 8
- **Cabins (total):** 397
- **Suites:** 6 Large Suite, 2 Small Suites.
- **Passenger capacity (as per PSSC):** 782
- **Passenger berths (All berths):** 994
  - (Lower berths): 780
  - (Singles) 548
  - (Folding) 446
- **Crew/Passenger Ratio (max):** 2.38



# MONA LISA

- **Size Range** (sq meters): 11.34 – 43.50
  - **Cabins** (Outside view): 292
  - (Interior/no view): 105
  - (Amenities): • Television and music channel with multi-channel reception (satellite) • Telephone communication with land reception • (68) Cabins have refrigerators
- **Main Dining Room (Coral Restaurant)** (seating capacity): 432
- **A La Carte Dining Room:** (seating capacity): 28
- **Lido Buffet:** (seating capacity): 218
- **Show Lounge:** (seating capacity): 307 + 20
- **International Lounge:** (seating capacity): 350
- **Carib Lounge:** (seating capacity): 190 + 12 annex
- **Starlight Lounge:** (seating capacity): 113+ 59 annex
- **Riviera Bar:** (seating capacity): 73
- **Beer Bar:** (seating capacity): 20
- **Galleys:**
  - - All Passenger Galleys: Full equipment
  - - Crew Galley: Full equipment for crew rating
- **Jacuzzi** (capacity): 2
- **3 Swimming Pools** (capacity): 72, 70, and 65 Tonnes.
- **Shopping:** 1 gift shop
- **Hospital:** Full equipment
- **Laundry:** Full equipment
- **Photo Lab:** Full equipment
- **Hair Salon:** Full equipment

# MONA LISA

## CABIN BREAKDOWN

<u>Category</u>	<u>Location</u>	<u>Quantity</u>	<u>Sq. Meters</u>
Mini Suite (Q)	External	2	26.50
Luxury Suite (R)	External	6	43.50
B	Internal	12	13.00
C	"	18	12.10
D	"	35	12.48
E	"	10	17.80
F	"	13	13.30
G	"	10	11.34
H	External	10	12.52
U	"	24	12.96
J	"	46	17.30
K	"	30	17.30
L	"	39	15.60
M	"	36	20.90
N	"	24	17.70
O	"	20	18.60
P	"	55	18.30
<b>Total:</b>		<b>390</b>	

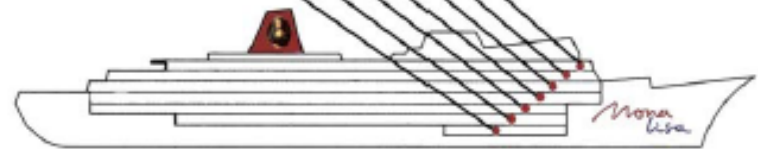
- Note: Category breakdown based on previous charterer. There are an additional seven (7) cabins that were used by the charterer for their purposes and not marketed in their brochure.

# MONA LISA

## DECK PLAN

Lido Deck  
 Riviera Deck  
 Aloha Deck  
 Baja Deck  
 Coral Deck  
 Dolfin Deck  
 Emerald Deck

### Deck Plan



# MONA LISA

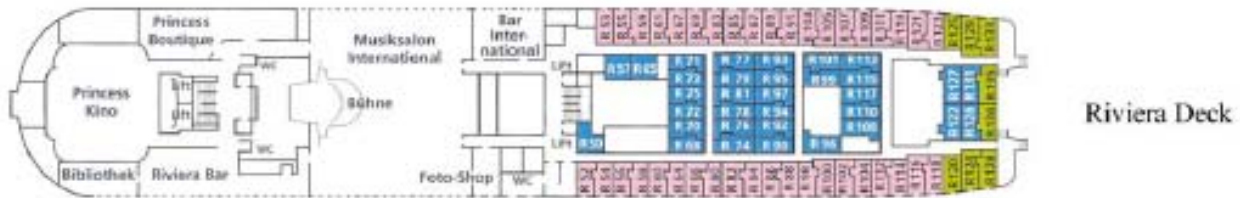
## DECK PLAN



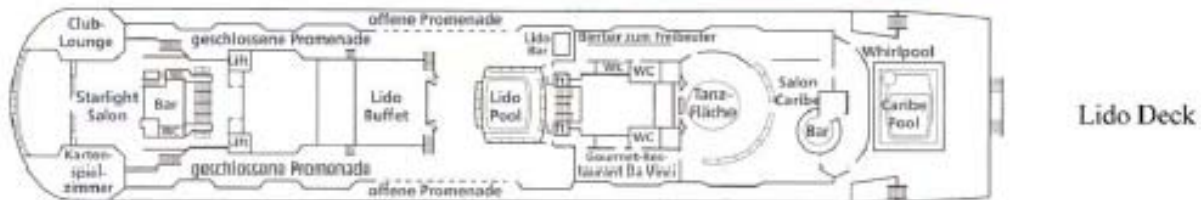
Baja Deck



Aloha Deck



Riviera Deck



Lido Deck

# MONA LISA





# MONA LISA

Club Lounge

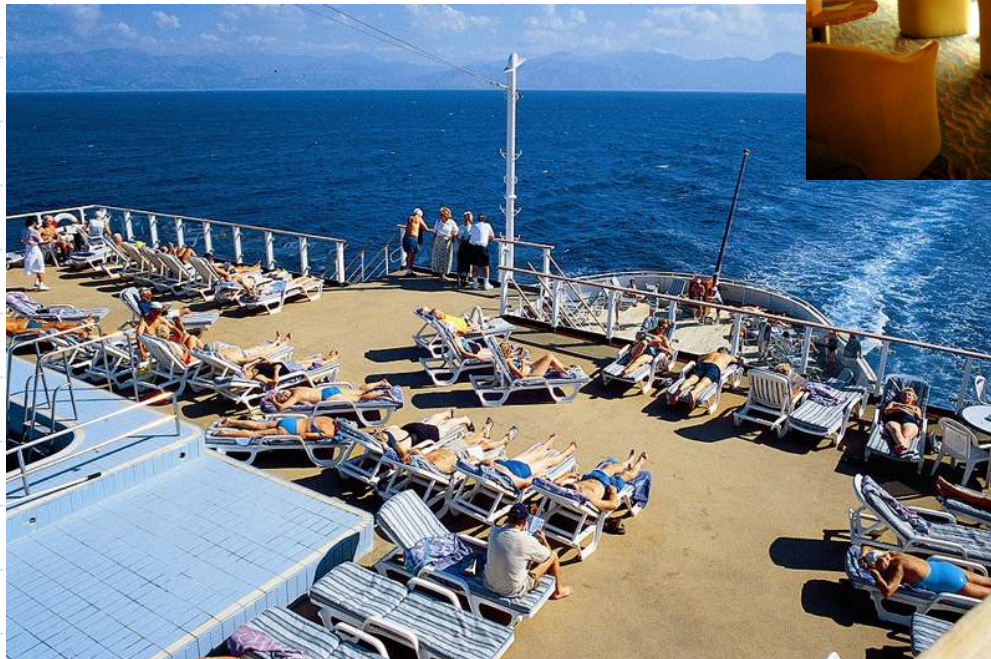


DaVinci Restaurant



# MONA LISA

Music Lounge



Aft Deck

# MONA LISA



Starlight Salon



Salon Caribe

# MONA LISA

Cabin



Luxury Suite



# CONTACT INFORMATION

Boston

**TARGET LOGISTICS**  
Innovative Housing and Transportation Solutions

Target Logistics  
46 Birmingham Parkway  
Boston, MA 02135

[www.targetlogistics.net](http://www.targetlogistics.net) | 617.562.1300

- Brian Lash      [brian@targetlogistics.net](mailto:brian@targetlogistics.net)  
ext. 302
- Joe Murphy      [joemurphy@targetlogistics.net](mailto:joemurphy@targetlogistics.net)  
ext. 349